

Many come to Montreat looking forward to hiking a wooded trail to the top of Lookout or enjoying the sights and sounds of a mountain creek. Natural beauty in every season offers quiet and solitude and the chance to get off the beaten track. For some, those enjoyments are just not easily reachable. Our new all persons trail will change that by creating a universally accessible path to Flat Creek. We hope you will help us "fund" our way there. The new 0.1 mile trail will transform an unused access road just inside the Montreat gate, on the right side, south of the Memorial Garden. This trail is the first accessible site intended to link to existing Montreat trails. Stop by next time you are in town to check on our progress!



Join us on this exciting new project!

CREATE

Our goal is to create a safe, barrier-free trail that will provide equal access for all to the natural beauty of this creekside setting.

CONTRIBUTE

\$305,000 is needed for excavation, permeable surfacing, trailhead/parking construction, signage, stone benches, plantings of native species to continue to shade the water, edit views and protect the creek. There are several technical challenges to meet for stabilizing the creek bank, creating the riparian buffer and necessary stormwater engineering. This trail will be sustainable with budget set aside for ongoing maintenance. Please consider making your tax-deductible donation so the work can begin.

Make checks out to Town of Montreat with Flat Creek Crossing on the memo line. Mail to Town of Montreat, P.O. Box 423, Montreat, NC 28757

Sweat equity is also needed! Can you provide hands on help with removing debris and invasive plants? See www.montreatlandcare.org to sign up for scheduled work days.

CARE

for the land and water of Montreat's unique forest cove. Protect Flat Creek and ensure that future generations will have a place to be refreshed alongside this beautiful mountain stream.

We want everyone to be able to get to the creek!



For more information about getting involved with Flat Creek Crossing or other Landcare projects, visit

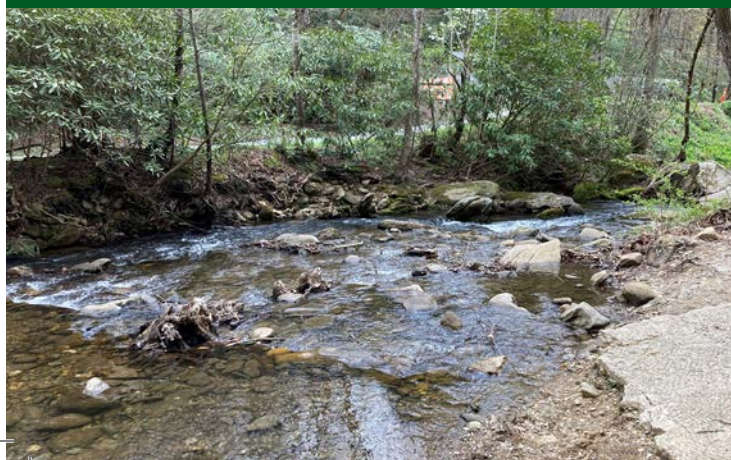
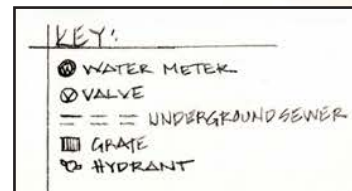
www.montreatlandcare.org



COMING SOON!
Montreat's First
All Persons Trail

Flat Creek Crossing Trail will include:

- Designated accessible parking
- Convenient drop off spot for those with mobility challenges
(see Welcome Zone on map)
- Ten foot wide, smooth trail made of environmentally friendly materials. Curb and handrail for safety
- Scenic picnic area with stone seating & Leave No Trace instruction
- Signs to educate about natural features and how to be helpful to those who live with disabilities



Your help is needed!

Please consider a tax deductible donation made out to Town of Montreat, with Flat Creek Crossing on the memo line.

Send to:

**Town of Montreat
P O Box 423
Montreat, NC 28757**